



impactfutures.co.uk

**IMPACT
FUTURES**

Level 2 Adult Care Worker

Caring for and supporting the needs of adults



Adult care worker apprenticeship standard

This level 2 apprenticeship training programme develops the knowledge, skills and behaviours required to care for and support the needs of adults, enabling them to have control and choice in their lives.

It is suitable for care assistants, care workers, support workers and other associated job titles.

At the end of this training programme, you will also be awarded a Level 2 TQUK Diploma in Care.

Entry requirements

You must have been a UK, EEA, or EU resident for at least the past three years to undertake this training programme.

In addition, you must be able to commit to the full length of the programme, and be able to meet the programme modules through your job role.

If you do not have a level 2 or equivalent in Maths and English, you will be required to work towards achieving these qualifications as part of your apprenticeship.

What is the duration and how will you learn?

Over the duration of 16 months, you will receive a combination of face-to-face and online training and support.

You will undertake an online assessment that will help us to understand your learning style and needs, then we will tailor your learning experience accordingly.

We ensure that you stay on track to complete your programme on time by managing your progress through our state-of-the-art e-portfolio system, Aptem.

Off the job training

As part of the apprenticeship, alongside your job role, a **minimum of 6 hours per week** of your time in work must be dedicated to improving new skills, knowledge and behaviours.

This can be any time devoted to learning and improving new skills, knowledge and behaviours without interruption, and can include:



Online teaching



Digital learning resources



One to one tuition



Workplace assessment

End-point assessment

Learnt knowledge, skills and behaviours will be assessed by an independent assessor in your end-point assessment (EPA). This typically involves elements such as:



Multiple choice examination

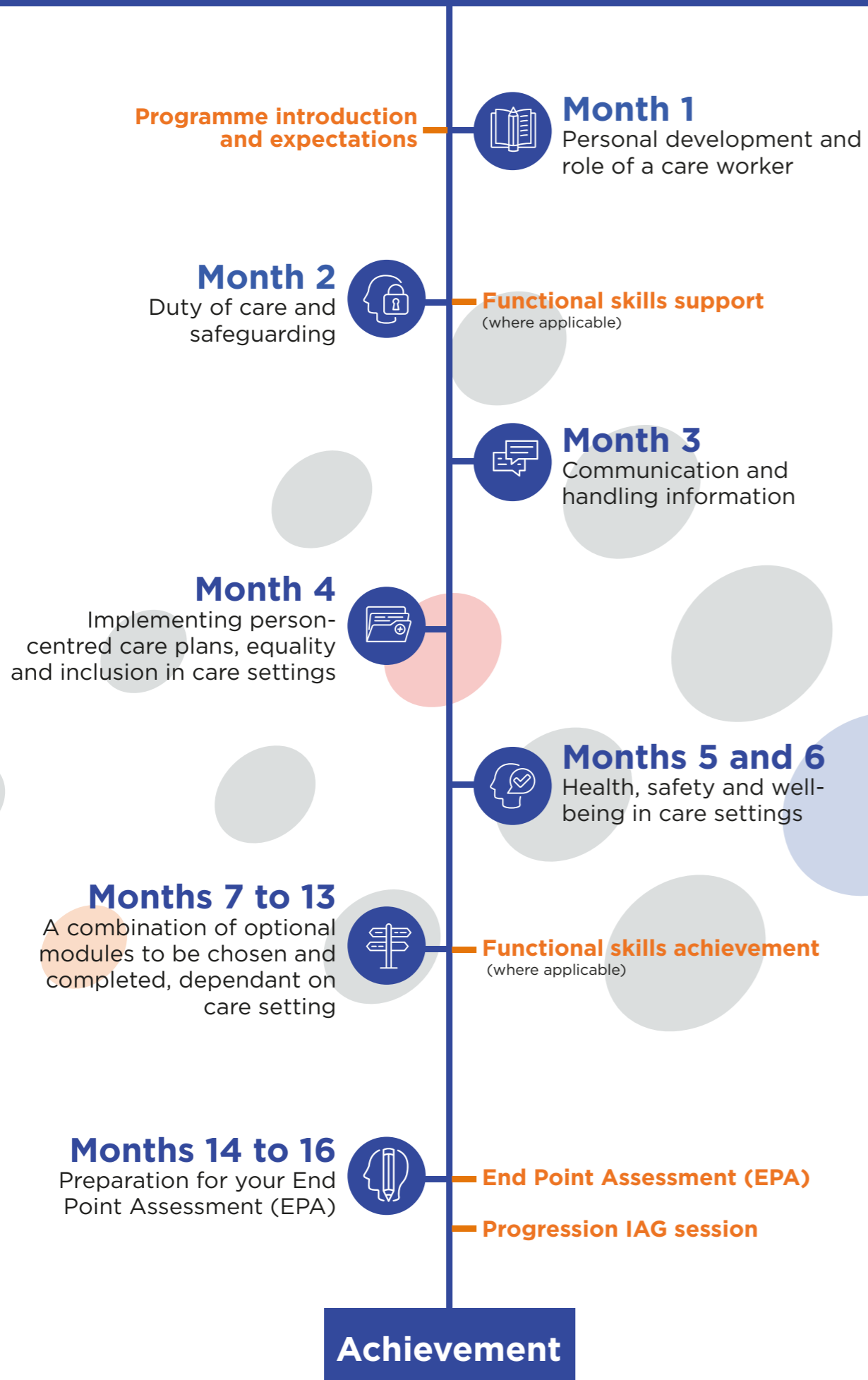


Professional discussion



Portfolio building

Your apprenticeship journey



You will learn how to:

Support individuals with daily living activities

- ✓ Achieve the tasks and responsibilities of your job role
- ✓ Support with individuals' social activities
- ✓ Monitor health
- ✓ Assist with eating, mobility and personal care, according to the individual's personal care/support plan
- ✓ Access, follow and be compliant with regulations and organisational policies and procedures

Develop yourself

- ✓ Understand your professional boundaries and limits of your training and expertise
- ✓ Ask for help from an appropriate person when not confident or skilled in any aspect of your role

Implement person-centred care plans

- ✓ Provide individuals with information to enable them to have choices about the way they are supported, ensuring compliance with the relevant statutory standards and codes of practice for your role
- ✓ Understand the 'duty of care' in practice
- ✓ Encourage individuals to participate in the way their care and support is delivered
- ✓ Contribute towards the development and creation of care plans which are underpinned by the individual's support preferences
- ✓ Identify, respond to and escalate changes to the physical, social, and emotional needs of individuals, contributing to the ongoing development of care/support plans and support with cognitive, physical or sensory impairments

The 5 pillars of wider learning

Sustainability



Sustainability is about protecting the future of our environment.

Why do we need to learn about sustainability within an apprenticeship?

Through learning about the world and how to best keep it sustainable, you can be encouraged to safeguard and enhance our natural resources.

Developing your attitudes and behaviours to be more environmentally conscious, you can protect the future of our environment.

CIAG



CIAG provides us with careers information, advice, and guidance.

Why is the support of CIAG important within an apprenticeship?

To be inspired, as a learner, to be proactive and to believe in your ability to achieve your aspirations.

This support will help you learn about career pathways available to you, and will:

- Increase your knowledge about the world of work
- Inspire you to succeed
- Improve your social mobility and life chances
- Help you make informed decisions

Cultural capital & personal development



Cultural capital and personal development is about boosting your employability and work and life skills.

Why do we need to understand cultural capital and personal development within an apprenticeship?

Learning about real-life situations and navigating through them will provide you with essential knowledge, that you may need to ensure future success.

This can include: resilience, confidence, time management, finance management, and much more- all important work, behaviour, attitude, and life skills.

British values, safeguarding & prevent duty



We have a responsibility to keep learners safe during their learning, but we are also responsible for what happens beyond that, too.

British values:

As our learner, you should understand: your right to make safe choices; the rule of law is there to protect you; you should be respected for who you are (regardless of age, race, gender and background); and you live in a democracy allowing you to be involved in decisions that protect you.

Safeguarding:

We can ensure that you are supported by the right people at the right time.

Prevent duty:

We can recognise when targets are preyed upon by extremists and we act, report and get help to stop their recruitment.

Equality, diversity & inclusion



Promoting equality, diversity and inclusion entails fair treatment and equal opportunities for all learners.

The impact of embedding these integral areas into your learning programme means that you will be more aware of your social responsibility to protect the vulnerable in our wider society. This will enable an inclusive mindset in your work and home life, as you develop and grow in your career.

Understanding how to protect those in our society from abuse and extreme idealisms, will further enable our future living and working lives becoming safer and fairer.

Level 2 Adult Care Worker

Modules of learning

Module 1: Personal development and role of a care worker

- Understand what is required for competence in own work role
- Use learning opportunities and reflective practice to contribute to personal development
- Work in agreed ways with your employer

Module 2: Duty of care and safeguarding

- Understand the implications of duty of care
- Understand the principles of safeguarding adults

Module 3: Communication and handling information

- Understand why communication is important in the work setting
- Meet the communication and language needs, wishes and preferences of individuals
- Understand the need for secure handling of information in care settings
- Handle information in accordance with agreed ways of working

Module 4: Equality, inclusion and person centred approaches

- Understand person centred approaches for care and support
- Work in a person centred way
- Ensure equality and inclusion

Module 5: Health, safety and well-being in care settings

- Understand own and others' work setting health and safety responsibilities
- Work in a way that maintains the health and safety of individuals

Module 6: Optional modules

- Infection prevention & cleaning, decontamination and waste
- Move and position individuals in accordance with care plan
- Support individuals to eat and drink
- Understand mental health problems and dementia awareness
- Contribute to the support of individuals with multiple conditions or disabilities
- Provide active support

Making an impact, now and in the future

Your career is a path, not a programme. We want to understand your career goals for the future now, so that we're best placed to assist, guide and inform you on your options.



The next level

If you want to up-skill further upon completing this programme, consider our level 3 lead adult care worker apprenticeship.



Integrity



Fun



Diversity



Connecting



Committed



Make an impact

We're all about making an impact, be that individuals making an impact through their day-to-day work, or by organisations making their impact on our economy.

As a national training provider, we make this impact throughout the UK, with expertise in childcare, healthcare, clinical and business skills apprenticeships.

01753 596 004 | info@impactfutures.co.uk

